

GE Healthcare

# Voluson Performance Series

*Extraordinary Vision*



## OB/GYN IMAGING. SIMPLIFIED.

The Voluson® Performance system is there when you need it. Ultrasound is a simple and affordable imaging modality helping provide vital information in detecting and characterizing obstetric and gynecologic issues. The Voluson Performance Series ultrasounds offer:

- Effortless acquisition of superb 2D images
- Additional anatomical views with easy 3D imaging, for thorough assessments
- Simple user interface and comfortable system design
- Affordable addition to a practice with robust support tools

A hard-working imaging tool that's ideal for patient management, the Voluson Performance series has robust performance capabilities that fit your practice, your patients, and your budget.

## Effortless, expert imaging

Simply place the probe to get the information you need, without time-consuming modifications. With the Voluson Performance system, you can acquire excellent clinical images across all types of patients, quickly and easily.

- **Excellent 2D images** – Optimized for clarity and detail at the placement of a probe
- **Advanced Color Doppler** – To provide deeper insight into vascular anatomy and function
- **Exceptional penetration with consistent image quality** – To help with difficult-to-image patients
- **One-touch image optimization** – For fast efficient imaging





## Easy 3D imaging

3D/4D imaging enhances clinical confidence by providing additional anatomical perspective.

- Obtain views not possible with 2D scanning for a more complete evaluation

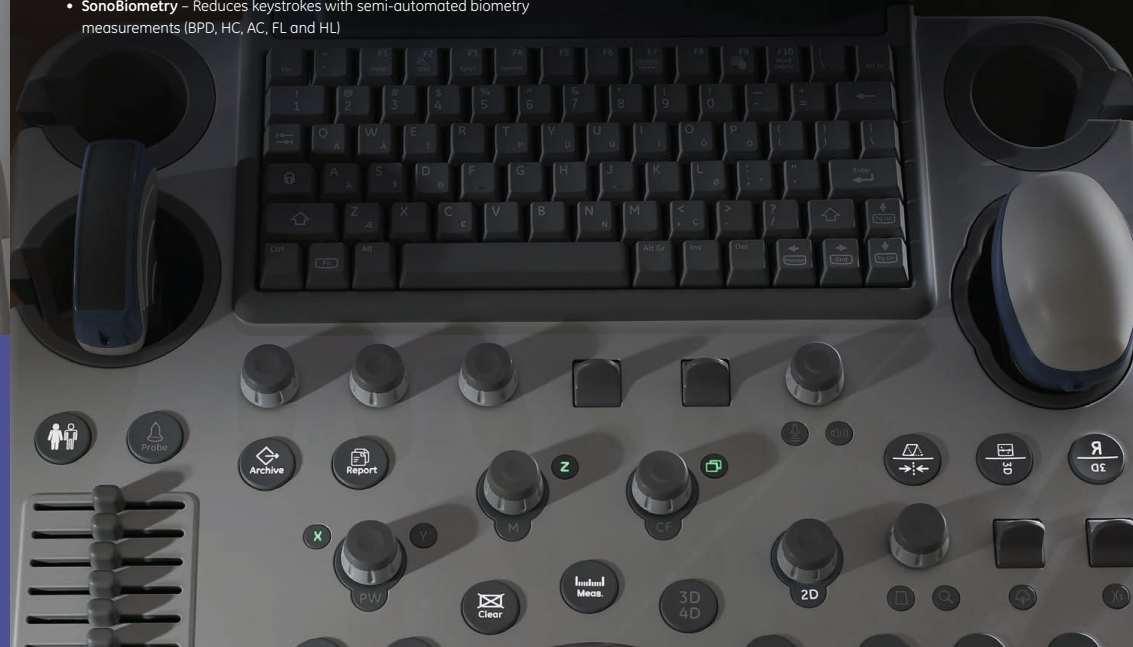
- Analyze volume data during the exam or offline after exam completion for efficient patient throughput
- View and manipulate volumes in sectional planes or in multiple render methods

## Streamline exams with Automation

Automated tools help reduce keystrokes and provide consistency to support clinical decision-making:

- **SonoRenderlive** - Automates renderline placement in 3D and 4D imaging for easy acquisition of surface rendered images
- **SonoBiometry** - Reduces keystrokes with semi-automated biometry measurements (BPD, HC, AC, FL and HL)

- **SonoNT** (Sonography-based Nuchal Translucency) and **SonoIT** (Sonography-based Intracranial Translucency) - Provides semi-automatic, standardized measurements of the nuchal and intracranial translucencies for 1<sup>st</sup> trimester assessment







## Intuitive scanning capabilities

The Voluson Performance system is a sleek, lightweight system that slips easily into small spaces and enables fast, effortless scanning and reporting.

**Scanning automation** helps improve exam quality and speed so you can make short work of heavy schedules:

- Auto optimization of 2D and Doppler – Helps enhance contrast resolution and spectral Doppler at the touch of a button for superb images

**Lightweight probes with wide field of view (FOV).** Choose from an extensive range of probes that deliver outstanding image quality with minimal user interaction.

- Wide-sector abdominal and endocavitary probes display more anatomical information in a single image than with standard FOV versions
- Lightweight probe options for user and patient comfort

**Intuitive keyboard design** provides fast access to frequently used functions to help reduce exam times and limit reaching that can cause user fatigue.

**17-inch, flat-screen LCD monitor** provides high-resolution visibility under all lighting conditions and moves independently of the console for easy adjustment and user comfort.

**Simplified reporting and archiving**

- Create structured reports (1<sup>st</sup>, 2<sup>nd</sup> and 3<sup>rd</sup> trimester, gynaecology) in minutes
- Export PDF reports with images and graphs at the touch of a button
- Wireless connectivity for efficient, secure transmission of reports and images

**Integrated peripherals** including a software DVR for efficient documentation.

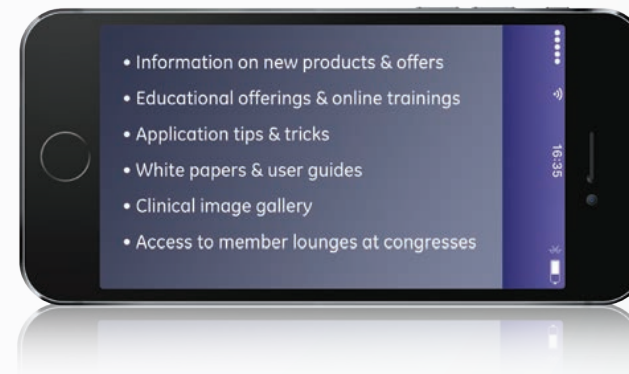




# Sensible spend, continued value

The Voluson Performance systems reflects GE's deep heritage in women's health ultrasound – and our commitment to providing technology that puts quality imaging within reach of all practices. The value of this system extends beyond its innovative hardware and software to include:

- Financing options to address your budget requirements
- Reliable operation and responsive service to maximize uptime, and your ability to serve patients
- Access to system upgrades to expand your ultrasound capabilities as your practice grows
- Education and training programs to increase user skills and maximize your system's potential
- Membership in the Voluson Club, our global users' community, with access to educational resources and peer-to-peer best-practice sharing to help you get more from your system ([www.volusonclub.net](http://www.volusonclub.net))



## Imagination at work

[www.gehealthcare.com](http://www.gehealthcare.com). Product may not be available in all countries and regions. Contact a GE Healthcare Representative for more information.

Data subject to change.

© 2016 General Electric Company.

GE, the GE Monogram, imagination at work and Voluson are trademarks of General Electric Company.

Reproduction in any form is forbidden without prior written permission from GE. Nothing in this material should be used to diagnose or treat any disease or condition. Readers must consult a healthcare professional.